

SPOTLIGHT ON

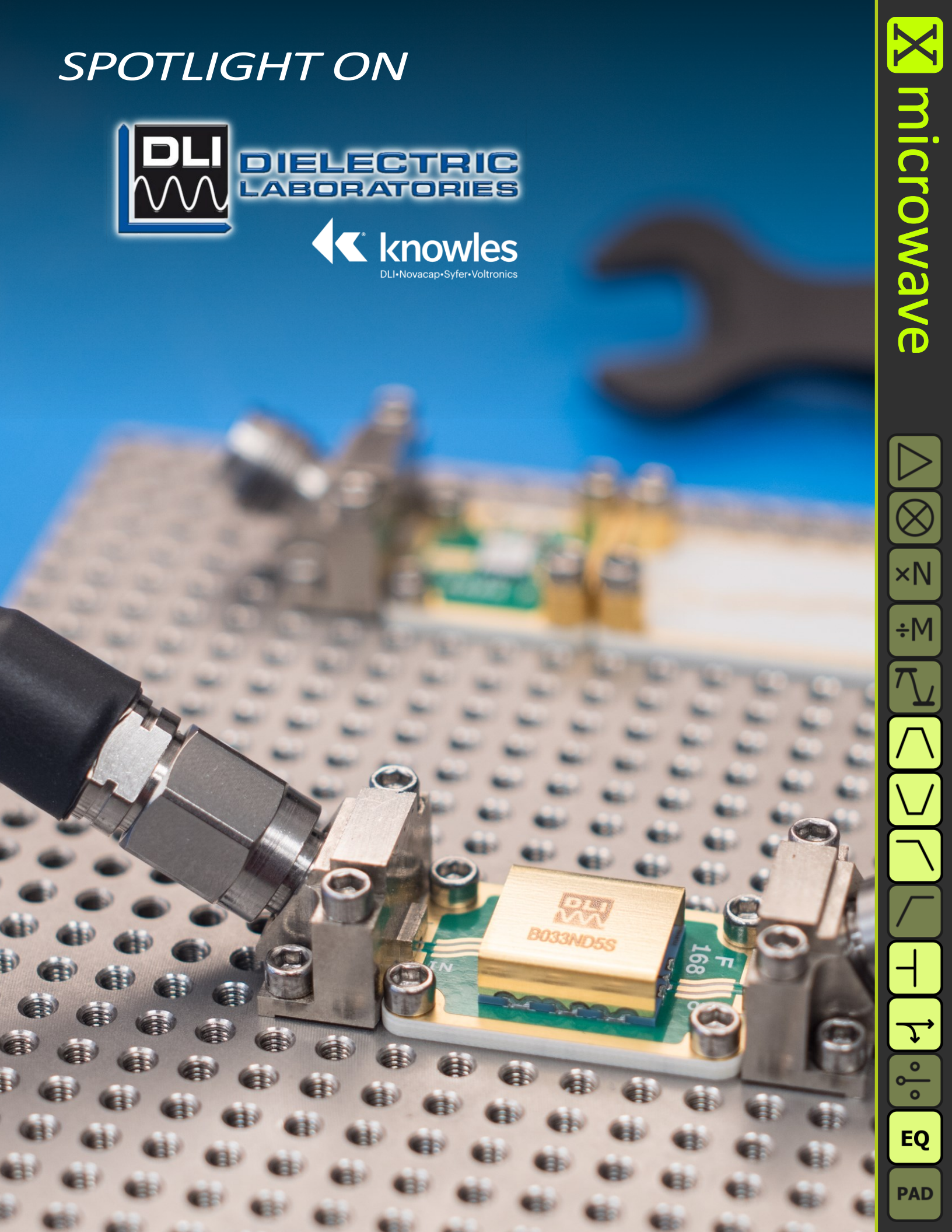


**DIELECTRIC
LABORATORIES**



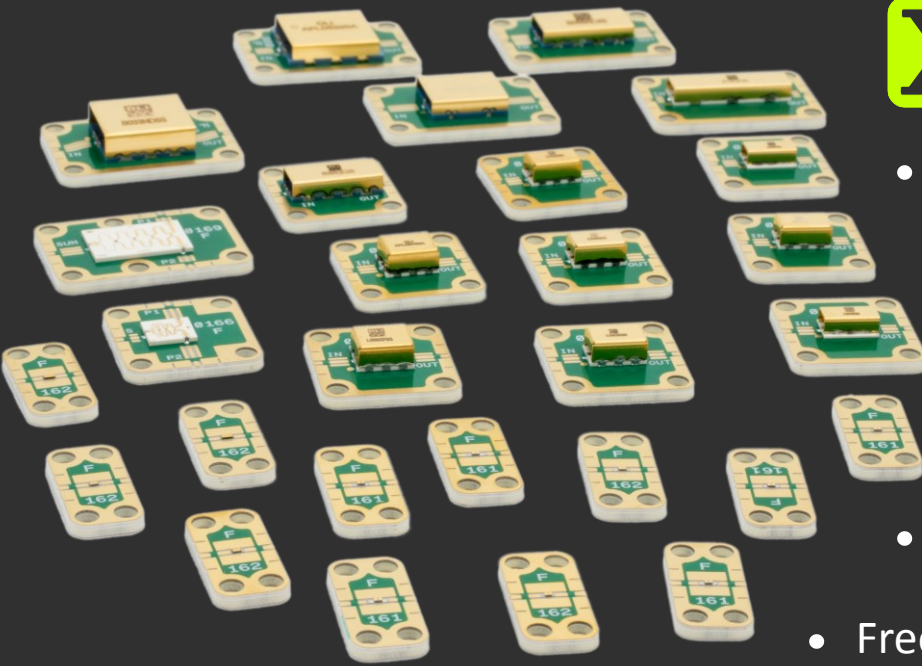
knowles

DLI • Novacap • Syfer • Voltronics



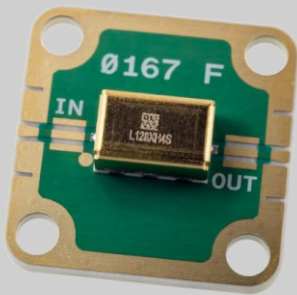
X microwave





- Modular Building Block System
 - DLI Thin Film Products
 - Filters, Couplers, Splitters, EQ
 - Modeled at the Launch
 - Drop-In, Connectorized and EVAL
- Free Online System Simulation

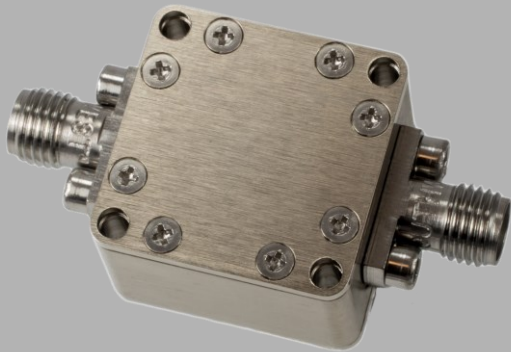
Drop-In Option



At left is X-Microwave part number XM-A2F8-0404D, populated with A DLI low pass filter.

Order code: D example: XM-A2F8-0404D

Connectorized Housing Option

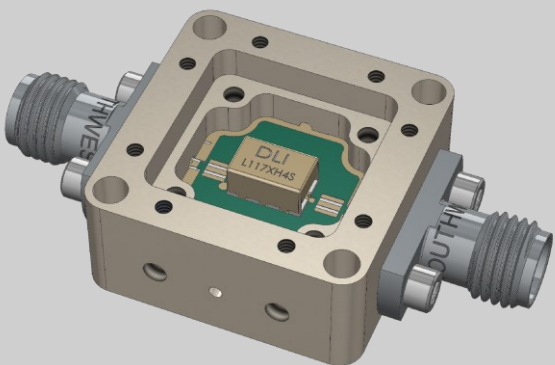


The Machined Housing Option features a precision-machined, nickel-plated aluminum housing with Heli-Coil® inserts and thru-hole mounting provisions.

Connector options include Super SMA, 2.92mm, and 1.85mm.

Order code: C example: XM-A2F8-0404C

Open Frame “EVAL” Option

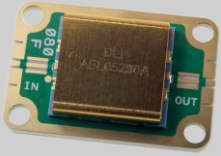


Select the EVAL Option whenever a low-cost, connectorized, high performance means is needed to evaluate a specific X-MWblock. Since the connectorized frame makes a solderless connection to the X-MWblock, both the frame and the block can be independently reused.

Order code: E example: XM-A2F8-0404E

* Option Code
 D = Drop-In
 C = Connectorized
 E = EVAL Option

Band Pass Filters



DLI Part Number	X-MW Part Number	Center Freq (MHz)	3dB BW (%)	IL (dB)	20 dB Rej Freq (MHz)
B028RF2S	XM-A2C2-0604*	3000	75	2	1650 & 4380
B033ND5S	XM-A2U1-0604*	3360	22	2	2840 & 3840
B056RC4S	XM-A2C3-0604*	6000	75	2	3560 & 8500
B096QC2S	XM-A2B3-0404*	10000	54	2	6350 & 13500
B148QF0S	XM-A265-0604*	15000	50	2	10500 & 20000
AFL3702	COMING SOON	TBD	TBD	TBD	TBD
B012MD5S	XM-A2Y9-0604*	1227	15	2	1070 & 1350
B016MD6S	COMING SOON	TBD	TBD	TBD	TBD

Band Stop Filters



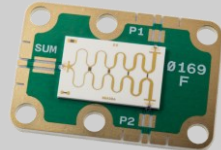
DLI Part Number	X-MW Part Number	Center Freq (MHz)	Min Rejection (dB)	3 dB Rej Freq (MHz)	20 dB Rej Freq (MHz)
N012ME9S	XM-A2C4-0604*	1227	25	1140 & 1345	1200 & 1245
N016MD9S	XM-A311-0404*	1575	25	1465 & 1670	1548 & 1588

Low Pass Filters



DLI Part Number	X-MW Part Number	PB Edge (MHz)	3dB Loss (MHz)	20dB Loss (MHz)	40dB Loss (MHz)
L050XF9S	XM-A2C1-0404*	4800	5100	5600	5900
L065XG9S	XM-A2T9-0404*	6400	6700	7350	7860
L095XG9S	XM-A2F6-0404*	9000	9500	10700	12400
L117XH4S	XM-A2F7-0404*	11000	12300	15300	18450
L128XH4S	XM-A2F8-0404*	12000	13400	16200	19350
L157XG3S	XM-A2B9-0404*	15300	16400	18000	19200
L204XF4S	XM-A2B8-0404*	20000	20750	21900	23250
L254XF3S	XM-A2B7-0404*	24500	25300	27400	29400

2-Way Splitters



DLI Part Number	X-MW Part Number	Freq Range (MHz)	IL (dB)	Isolation (dB)	Phase Unbalance (Deg)
PDW06038	XM-A2T8-0604*	2000 - 10000	3.8	20	2
PDW05758	XM-A2B1-0404*	4500 - 18000	3.8	22	2
PDR05848	XM-A2N2-0404*	DC - 45000	6.8	6.8	2

Directional Couplers



DLI Part Number	X-MW Part Number	Freq Range (MHz)	Coupling (dB)	Thru Loss (dB)	Directivity (dB)
FPC06073	XM-A2Y1-0404*	4000 - 8000	10	1.0	22
FPC06076	XM-A2Y2-0404*	4000 - 8000	20	0.5	22
FPC06074	XM-A2Y3-0404*	8000 - 14000	10	1.0	13
FPC06077	XM-A2Y4-0404*	5000 - 14000	25	0.6	10
FPC06075	XM-A2Y5-0404*	10000 - 20000	10	1.2	12
FPC06078	XM-A2Y6-0404*	8000 - 22000	20	1.0	11

Equalizers



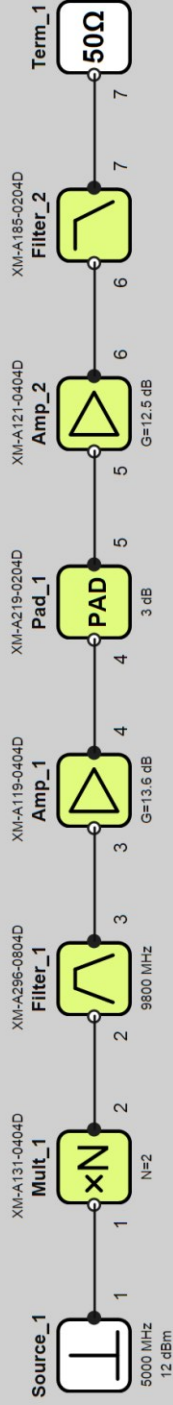
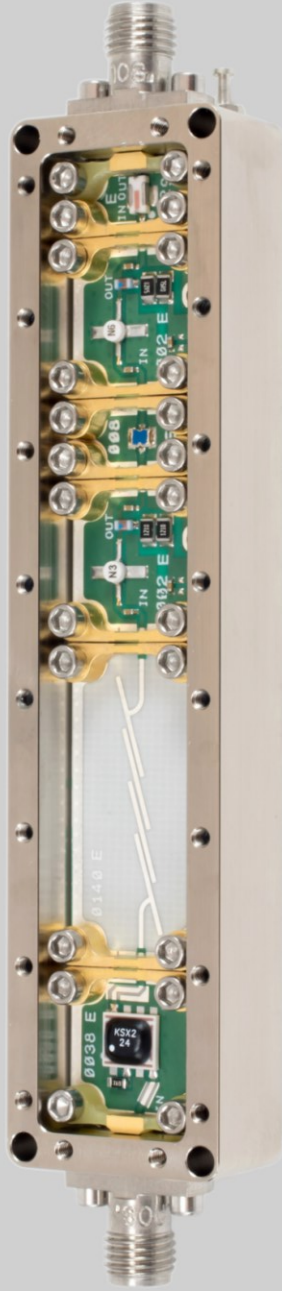
DLI Part Number	X-MW Part Number	Freq Range (MHz)	Gain Eq (dB)	IL @ Low Freq (dB)	IL @ High Freq (dB)
AEQ05467	XM-A2H7-0204*	DC—18000	0.7	1.0 @ 5 MHz	.25 @ 18GHz
AEQ05468	XM-A2H8-0204*	DC—18000	1.0	1.3 @ 5 MHz	.25 @ 18GHz
AEQ05469	XM-A2H9-0204*	DC—18000	1.5	1.8 @ 5 MHz	.25 @ 18GHz
AEQ05470	XM-A2J1-0204*	DC—18000	2.0	2.2 @ 5 MHz	.25 @ 18GHz
AEQ05471	XM-A2J2-0204*	DC—18000	2.5	2.8 @ 5 MHz	.25 @ 18GHz
AEQ05472	XM-A2J3-0204*	DC—18000	3.0	3.3 @ 5 MHz	.25 @ 18GHz
AEQ3042	XM-A2V7-0204*	DC—5000	0.5	0.6 @ 5 MHz	.15 @ 5GHz
AEQ3055	XM-A2V8-0204*	DC—5000	1.3	1.5 @ 5 MHz	.15 @ 5GHz
AEQ06042	XM-A2V9-0204*	DC—27000	2.7	3.2 @ 5 MHz	.50 @ 27GHz
AEQ05246	XM-A2W1-0204*	DC—15000	3.2	3.5 @ 5 MHz	.25 @ 15GHz
AEQ05510	XM-A2W2-0204*	DC—31000	2.0	2.3 @ 5 MHz	.28 @ 31GHz



10GHz
20GHz
50GHz

BOM
TIPS

Part Number	QTY	Price (USD)	Power (mW)
XM-A131-0404D	1	\$79.95	0
XM-A296-0804D	1	\$89.95	0
XM-A119-0404D	1	\$84.95	357
XM-A219-0204D	1	\$24.95	0
XM-A121-0404D	1	\$84.95	350
XM-A185-0204D	1	\$22.95	0
Total		\$387.70	707



Powered by
KEYSIGHT
TECHNOLOGIES

Node 7 Power Spectrum



sales@Xmicrowave.com
 (512) 355-7115
 www.xmicrowave.com

X-Microwave, LLC
 1050 Meadows Drive Suite 401
 Round Rock, Texas 78681