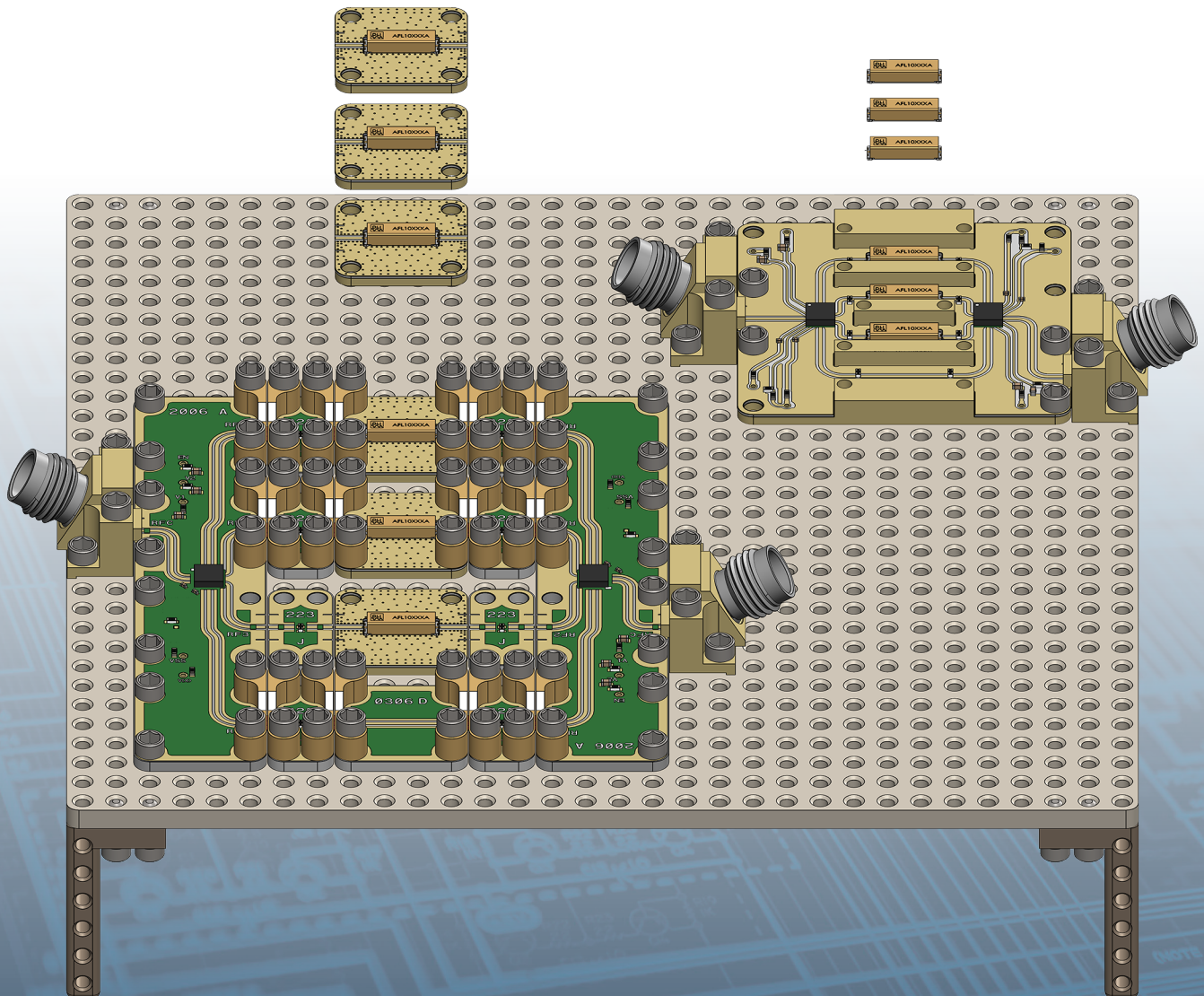


# SPOTLIGHT ON



Quantic™ X-Microwave

# DLI's X-MWblock® Availability



## Modular Building Block System

Over 250 DLI X-MWblock  
Drop-In components  
covering many RF-device  
categories

- Drop-In and Connectorized options
- Prototype full signal chains
- Standard and custom production Integrated Microwave Assemblies



Band Pass  
Filters



High Pass  
Filters



Band Stop  
Filters



Low Pass  
Filters



Couplers



Splitters &  
Combiners



Equalizers

## Cross Reference

### FEATURED PRODUCT

## B385MD0S Band Pass Filter

[XM-B7N3-0404D](#)

- Manufacturer Info & Specs
- Live S-Parameter Plot
- Drop-In
- Connectorized Module
- Integrated Microwave Assemblies

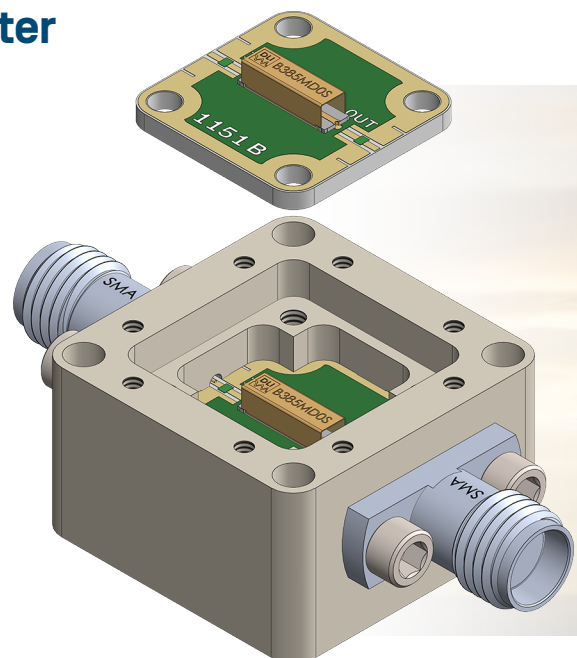
### LEARN MORE

[knowlescapacitors.com](https://www.knowlescapacitors.com) >

[Microwave Products](#) > [Bandpass Filters](#)

[quantixmw.com](https://www.quantixmw.com) > [Products](#) >

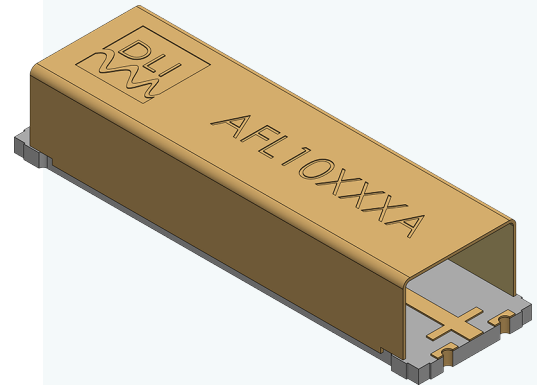
[X-MWblocks](#) > [Manufacturer](#) > [DLI](#)



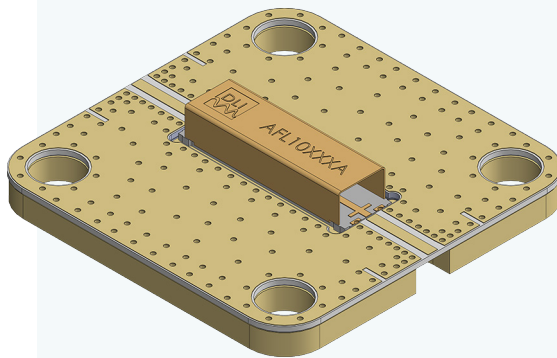
# Get on the Grid with Quantic X-Microwave

## Modular Platform

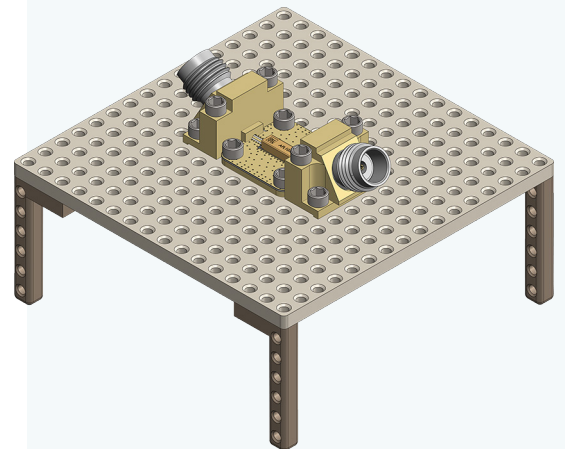
*Design > Prototype > Production*



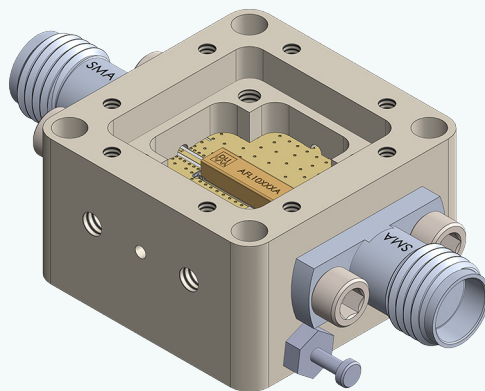
1. DLI Bandpass Filter



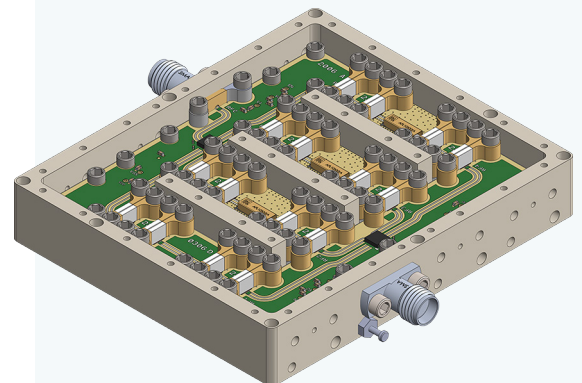
2. Drop-In X-MWblock



3. Drop-In on Prototype Plate



4. Drop-In in Connectorized Module



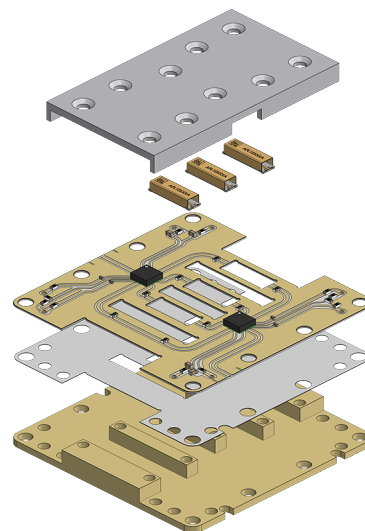
5. Drop-Ins in Integrated Microwave Assembly



Knowles DLI brand microstrip bandpass filters offer classical filter topologies yielding excellent performance in a small footprint when fabricated on ceramic substrate materials. Miniaturization can reach new levels by employing DLI high-k ceramic materials. Different techniques are employed to realize small size and high performance. Catalog devices come complete with integrated shielding and the surface mount versions are designed for use on most RF PWB materials.

To learn more, visit [www.knowlescapacitors.com](http://www.knowlescapacitors.com).

- C to above Ka band Frequencies
- Custom Devices 1–69 GHz
- Designed from 800 MHz to 67 GHz
- Temperature Stable: -55 to 125 degree C
- Filter Size reduction: up to 20× using CG material, 10× using CF, 3× using PG versus typical PWB
- High Repeatability—Thin Film manufacturing provides precise manufacturing performance; no tuning

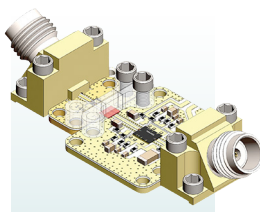


DLI Wire Bondable Bandpass Filters in Custom Drop-In Switched Filter Bank

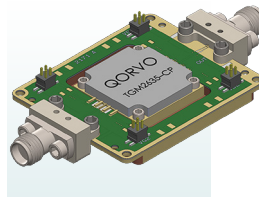
## Quantic X-Microwave

Quantic X-Microwave delivers industry-leading performance through advanced RF & Microwave solutions for the most demanding industries—from aerospace and defense to quantum computing to wireless infrastructure and radar. Compounding the value of X-MW's unrivaled domain expertise, our unique modular design system gets you to market faster than ever.

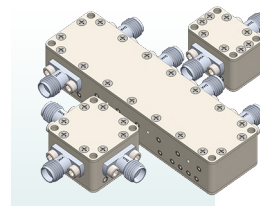
And now as a Quantic company, we're part of an extended engineering ecosystem and powerful supply chain, defining a competitive advantage that extends to every customer. To learn more, visit [www.quantixmw.com](http://www.quantixmw.com).



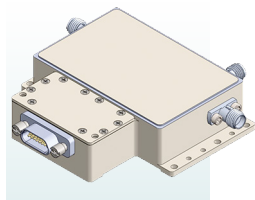
Drop-In Everything



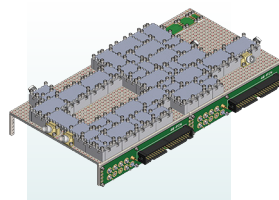
Power Amplifiers



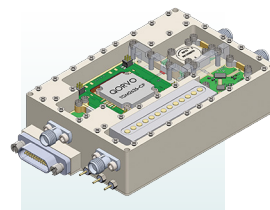
Connectorized Modules



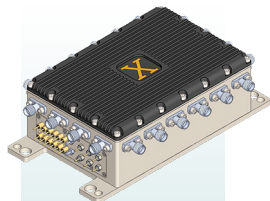
Hermetic Modules



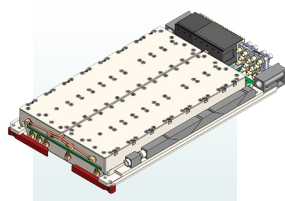
Quick-turn Prototypes



TxRx Modules



Benchtop Housing



OpenVPX

## Quantic X-Microwave

Optimizing the RF and microwave design process from DC to 100 GHz by seamlessly merging simulation, prototyping and production.

Contact us for more information:  
[quantixmw.com](http://quantixmw.com)  
 phone: +1 (512)-355-7115  
[sales@quantixmw.com](mailto:sales@quantixmw.com)

Quantic X-Microwave  
 14000 Summit Drive  
 Suite 900  
 Austin, TX 78728