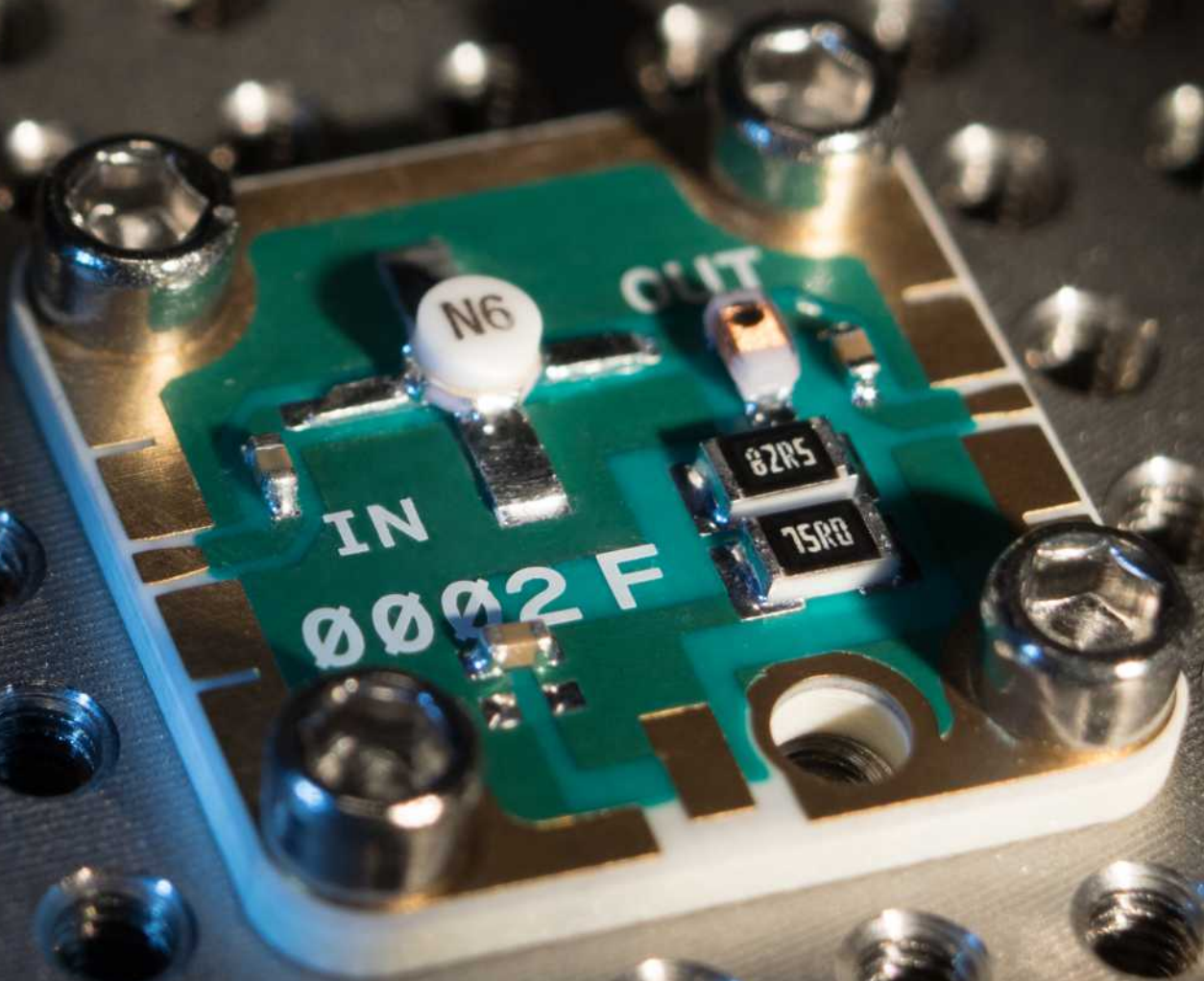




Modular By Design

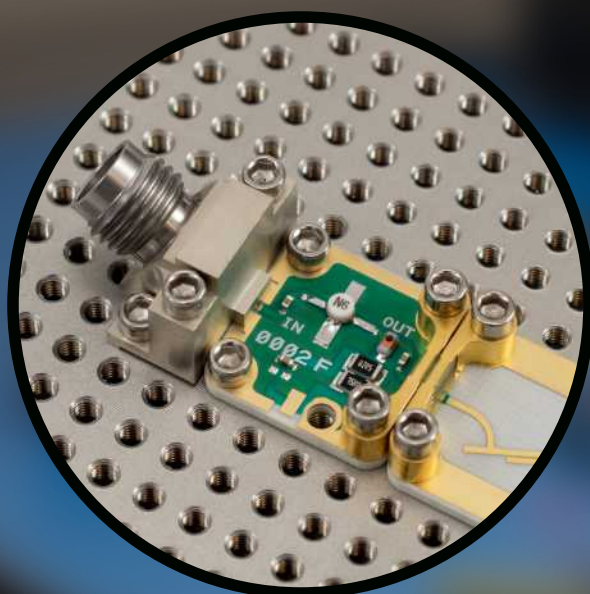
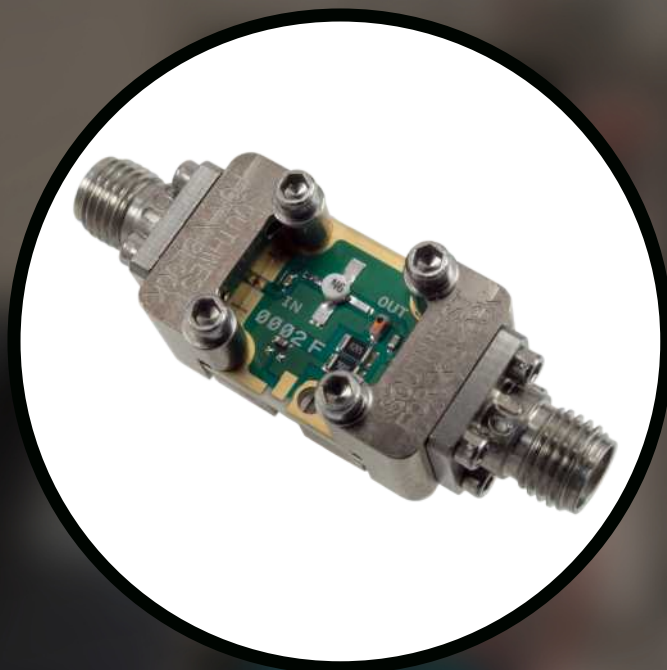
Drop-In Flexibility

100's of Drop-Ins
1 Standard Format

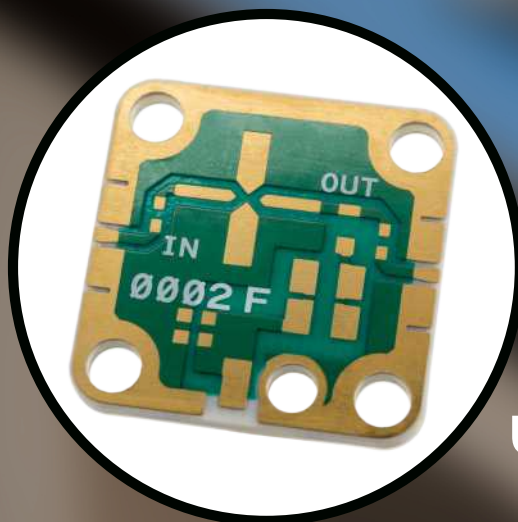
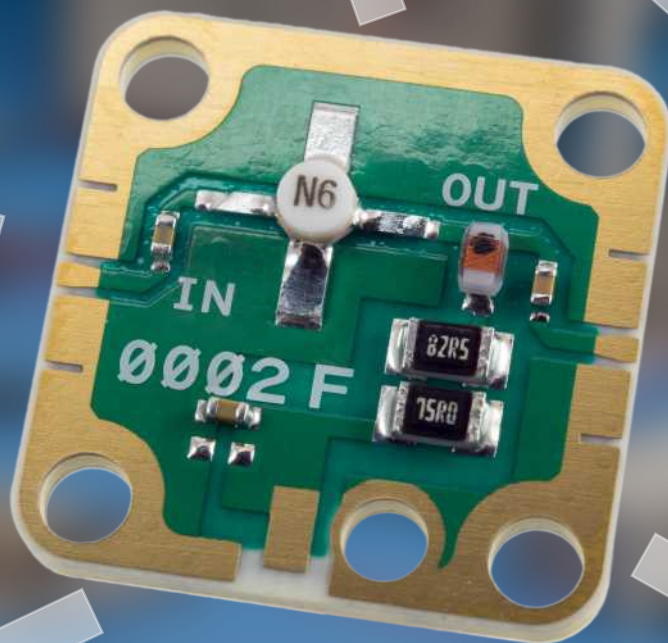


6 Ways to Use

"Stand-Alone" with
End Launch
Connectors

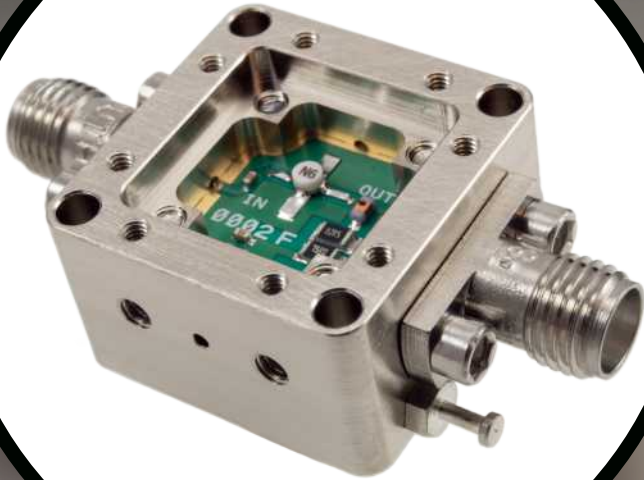


Prototype With Other
Drop-Ins

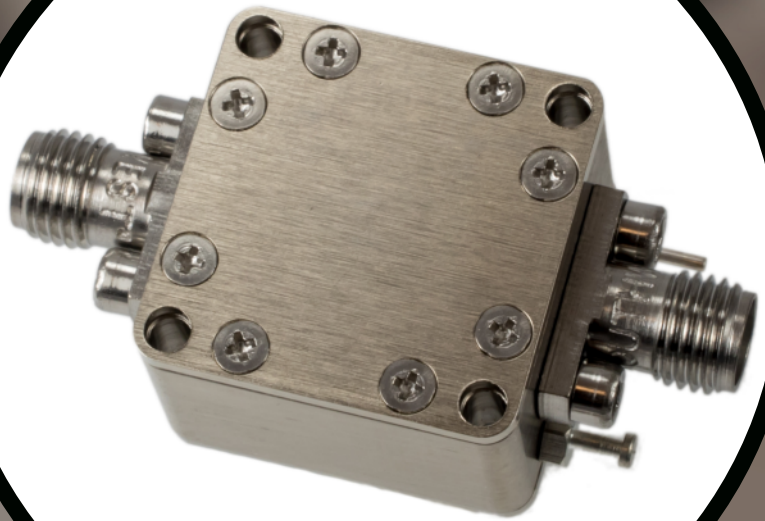


Available as
Unpopulated
PCB

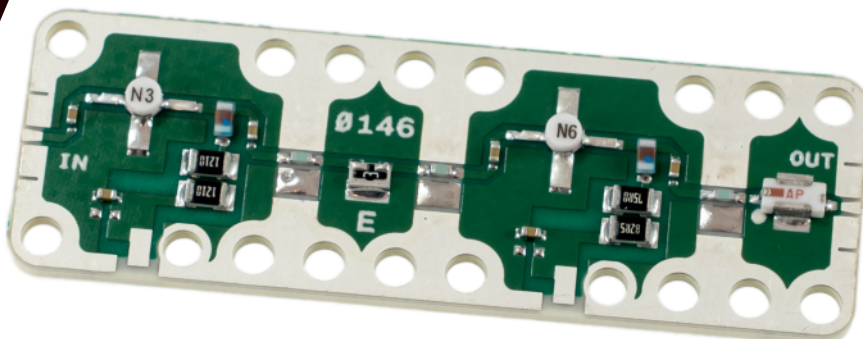
Installed in
"EVAL" Frame



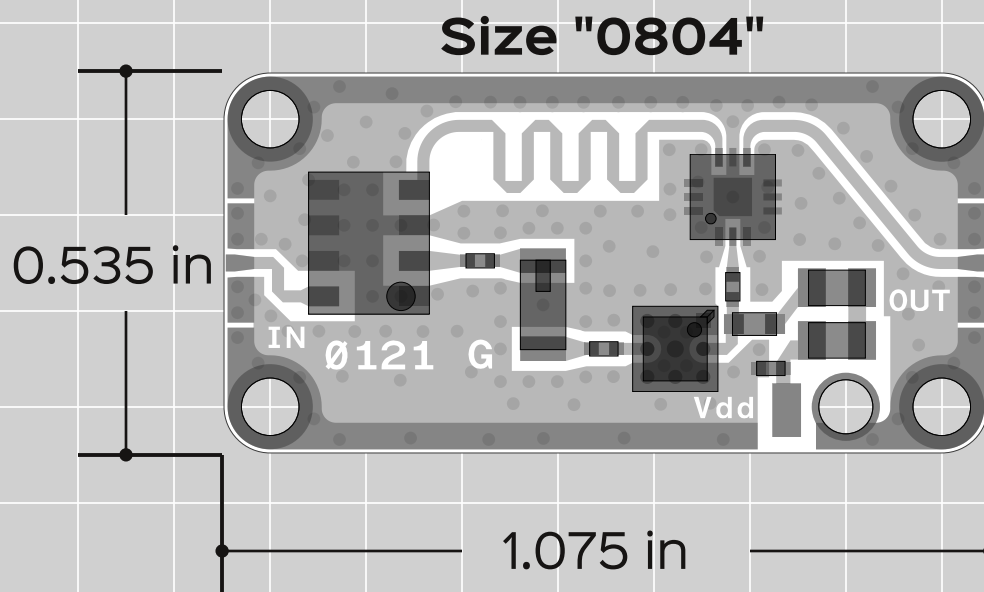
Installed in
Connectorized
Housing



Merged Into
IMA



Common X-MWblock Drop-In Sizes



Grid = 0.135 x 0.135 inches

X-MWblock Description			Drop-In Dimensions			Machined HSG Dimensions		
Form-Factor	Length (U)	Width (U)	Length (in)	Width (in)	PCB Thickness (in)	Length (in)	Width (in)	Height (in)
0204	2	4	0.265	0.535	0.049 +/-0.002	0.530	0.800	0.540
0304	3	4	0.400	0.535	0.049 +/-0.002	N/A	N/A	N/A
0404	4	4	0.535	0.535	0.049 +/-0.002	0.800	0.800	0.540
0604	6	4	0.805	0.535	0.049 +/-0.002	1.070	0.800	0.540
0804	8	4	1.075	0.535	0.049 +/-0.002	1.340	0.800	0.540
1204	12	4	1.615	0.535	0.049 +/-0.002	1.880	0.800	0.540
1604	16	4	2.155	0.535	0.049 +/-0.002	2.420	0.800	0.540
2404	24	4	3.235	0.535	0.049 +/-0.002	3.500	0.800	0.540
0409	4	9	0.535	1.210	0.049 +/-0.002	0.800	1.475	0.540
0809	8	9	1.075	1.210	0.049 +/-0.002	1.340	1.475	0.540
2409	24	9	3.235	1.210	0.049 +/-0.002	3.5	1.475	0.540
0419	4	19	0.535	2.560	0.049 +/-0.002	0.800	2.825	0.540
0819	8	19	1.075	2.560	0.049 +/-0.002	1.340	2.825	0.540
2819	28	19	3.775	2.560	0.049 +/-0.002	4.040	2.825	0.540